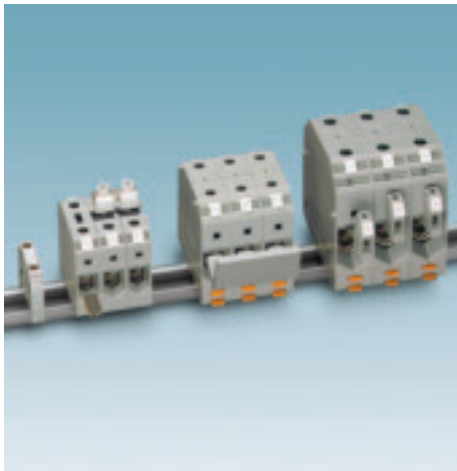


# The modular terminal block system - CLIPLINE complete

## UT universal terminals - Screw connection terminal blocks

### UKH ... feed-through high-current terminal blocks



The universal high-current terminal blocks cover the cross-section range from 16 - 240 mm<sup>2</sup>.

A reliable cable connection is guaranteed by effective constructive measures. For example:

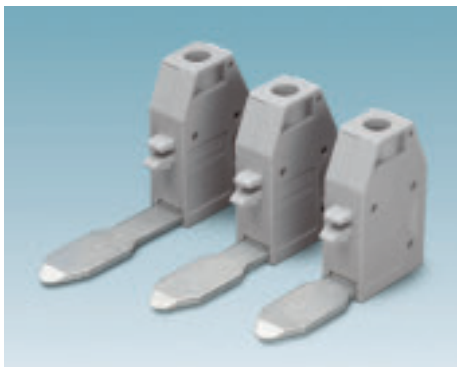
- Three-point centering of the wire in the prismatic sleeve base
- Low contact resistance of the contact surface due to ribbing
- Screws secured using spring-loaded elements

The terminal blocks have an enclosed half-shell insulation housing made of polyamide 6.6 and can be mounted on the NS 35 and NS 32 DIN rails in acc. with EN 60715.

For 16 - 95 mm<sup>2</sup>, green-yellow ground terminal blocks are available. See page 35.

#### AGK 10 UKH...

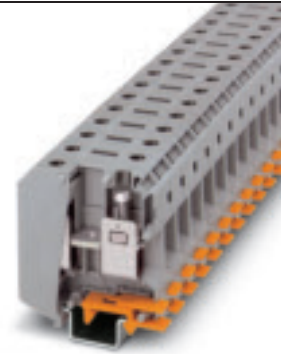
The fully insulated AGK 10 pick-off terminal blocks enable a voltage connection up to a nominal voltage of 1000 V (10 mm<sup>2</sup>) to be made with the high-current terminal blocks. All three versions can be labeled with the zack marker strip.



For more technical data, drawings and accessories, visit [www.phoenixcontact.net/eshop](http://www.phoenixcontact.net/eshop).

1) For information on installation for using accessories for Ex e applications, see page 720.

2) See page 326.



### UKH 50 ...

Ex: 
  
 KEMA 98ATEX1786U / IECEx KEM 06.0029U

Dimensions		Width	Length	Height NS 35/15
20	[mm]	20	70.5	83.5
Dimensions		Width	Length	Height NS 32
20	[mm]	20	70.5	81.5
Max. electrical data				
$I_{max}$ [A]		$U_{max}$ [V]		Max. Ø [mm <sup>2</sup> ] AWG
150		1000		16 - 70 6 - 2/0

Rated data	IEC 60947-7-1			
	IEC	UL / CUL	CSA	IEC/ EN 60079-7
Rated voltage [V]	1000	600	600	690
Nominal current / cross-section [A] / [mm <sup>2</sup> ]	150 / 50	150 / -	150 / -	137 / 50 // 137 / 50
Rated cross-section [mm <sup>2</sup> ]	50	-	-	50
Cross-section range AWG	6 - 2/0	6-1/0	6-1/0	6 - 1/0
Connection capacity		Ferrule without / with plastic sleeve		
One conductor [mm <sup>2</sup> ]	16 - 70	25 - 70	25 - 50	25 - 50
Two conductors (of the same type) [mm <sup>2</sup> ]	10 - 16	10 - 16	10 - 16	-
Max. cross-section with insertion bridge [mm <sup>2</sup> ]				
General data				
Stripping length [mm]	24			
Screw thread	M6			
Tightening torque [Nm]	6 - 8			
Insulating material	PA			
Inflammability class acc. to UL 94	V0			

#### Ordering data

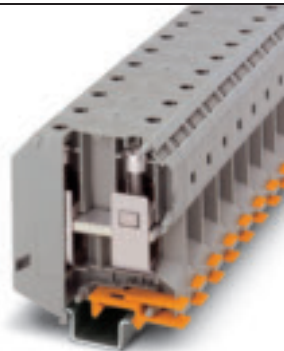
Description	No. of pos.	Color	Type	$I_{max}$	Order No.	Pcs. / Pkt.
<b>Terminal block</b> , for mounting on NS 32, NS 35/15 or NS 35/15-2.3		Gray	<b>UKH 50</b>		<b>3009118</b>	10
		Blue	<b>UKH 50 BU</b>		<b>3009105</b>	10

#### Accessories<sup>1)</sup>

<b>Pick-off terminal block</b> , when wiring the pick-off with a smaller cross-section, observe the overload and short-circuit resistances specified in VDE 0100 part 430.	Gray	<b>AGK 10-UKH 50</b>	57 A	<b>3001763</b>	10
<b>Fixed bridge</b> , for cross connections in the terminal center, screw heads with insulating collar, first remove partition plate					
	2 Silver	<b>FBI 2-20</b>	150 A	<b>0201346</b>	10
	3 Silver	<b>FBI 3-20</b>	150 A	<b>0201317</b>	10
<b>Insertion bridge</b> , fully insulated, is laid into terminal sleeve and snapped into the terminal housing					
	2 Gray				
	3 Gray				
<b>Insertion profile</b> , levels out the prism-shaped sleeve when using flat-ribbon conductors <sup>2)</sup>	Silver	<b>UKH 50 EP</b>		<b>3009228</b>	10
<b>End bracket</b> , for end support of UKH 50 - UKH 240, is pushed onto DIN rail and fixed with 2 screws, made of aluminum, 10 mm wide, for assembly on NS 32...	Silver	<b>E/AL-NS 32</b>		<b>1201659</b>	10
<b>Aluminum end clamp</b> , for screwing on, for end support of 50 - 240 mm <sup>2</sup> terminal blocks, can be labeled with ZB 10, for assembly on NS 35...	Silver	<b>E/AL-NS 35</b>		<b>1201662</b>	10
<b>Allen wrench</b> , fully insulated, in accordance with EN 60900					
<b>Screwdriver</b>		<b>SZS 1,2X8,0</b>		<b>1205082</b>	10
<b>UniCard sheet</b> , for labeling the lateral groove		<b>UC-TM 10 (see page 480)</b>			
<b>Zack marker strip</b> , for labeling the lateral groove		<b>ZB 10 (see page 489)</b>			

# The modular terminal block system - CLIPLINE complete

## UT universal terminals - Screw connection terminal blocks



UKH 95 ...



UKH 150 ...



UKH 240 ...



Ex: KEMA, CCA, IEC, UL, CE, etc.  
KEMA 98ATEX1786U / IECEx KEM 06.0029U

Width	Length	Height NS 35/15	
25	83	97.5	
Width	Length	Height NS 32	
25	83	95.5	
$I_{max}$ [A]	$U_{max}$ [V]	Max. $\varnothing$ [mm <sup>2</sup> ]	AWG
232	1000	25 - 95	4 - 3/0

IEC 60947-7-1			
IEC	UL / CUL	CSA	IEC/ EN 60079-7
1000	600	600	880
232 / 95	230 / -	200 / -	216 / 95 // 216 / 95
95	-	-	95
4 - 3/0	2-4/0	2-4/0	4 - 3/0
Solid	Stranded	Ferrule without / with plastic sleeve	
25 - 95	35 - 95	35 - 95	35 - 95
25 - 35	25 - 35	16 - 35	-
95	70		
33			
M8			
15 - 20			
PA			
V0			



Ex: KEMA, CCA, IEC, UL, CE, etc.  
KEMA 99ATEX8332 U / IECEx KEM 06.0030U

Width	Length	Height NS 35/15	
31	100	118.5	
Width	Length	Height NS 32	
31	100	116	
$I_{max}$ [A]	$U_{max}$ [V]	Max. $\varnothing$ [mm <sup>2</sup> ]	AWG
309	1000	35 - 150	2 - 300 kcmil

IEC 60947-7-1			
IEC	UL / CUL	CSA	IEC/ EN 60079-7
1000	600	600	1100
309 / -	285 / -	275 / -	256 / 150 // 256 / 150
150	-	-	150
2 - 300 kcmil	2-300	2-300	2 - 300
Solid	Stranded	Ferrule without / with plastic sleeve	
35 - 150	50 - 150	50 - 150	50 - 150
25 - 50	35 - 50	25 - 50	-
150	120		
40			
M10			
25 - 30			
PA			
V0			



Ex: KEMA, CCA, IEC, UL, CE, etc.  
KEMA 99ATEX8332 U / IECEx KEM 06.0030U

Width	Length	Height NS 35/15	
36	100	131.5	
Width	Length	Height NS 32	
36	100	129.5	
$I_{max}$ [A]	$U_{max}$ [V]	Max. $\varnothing$ [mm <sup>2</sup> ]	AWG
415	1000	70 - 240	2/0 - 500 kcmil

IEC 60947-7-1			
IEC	UL / CUL	CSA	IEC/ EN 60079-7
1000	600	600	1100
415 / 240	380 / -	400 / -	350 / 240 // 350 / 240
240	-	-	240
2/0 - 500 kcmil	2/0-500	1/0-500	2/0 - 500
Solid	Stranded	Ferrule without / with plastic sleeve	
70 - 240	70 - 240	70 - 185	50 - 185
35 - 95	50 - 95	35 - 50	-
240	185		
40			
M10			
25 - 30			
PA			
V0			

Type	$I_{max}$	Order No.	Pcs. / Pkt.
UKH 95		3010013	10
UKH 95 BU		3010136	10

Type	$I_{max}$	Order No.	Pcs. / Pkt.
UKH 150		3010110	10
UKH 150 BU		3010123	10

Type	$I_{max}$	Order No.	Pcs. / Pkt.
UKH 240		3010217	10
UKH 240 BU		0711852	10

AGK 10-UKH 95	57 A	3003541	10
---------------	------	---------	----

AGK 10-UKH 150/240	57 A	3003554	10
--------------------	------	---------	----

AGK 10-UKH 150/240	57 A	3003554	10
--------------------	------	---------	----

EB 2-25/UKH	232 A	0201362	10
EB 3-25/UKH	232 A	0201375	10
UKH 95 EP		3009231	10

EB 2-31/UKH	232 A	0201388	10
EB 3-31/UKH	232 A	0201391	10
UKH 150/240 EP		3009244	10

EB 2-36/UKH	320 A	0201401	10
EB 3-36/UKH	320 A	0201414	10
UKH 150/240 EP		3009244	10

E/AL-NS 32		1201659	10
------------	--	---------	----

E/AL-NS 32		1201659	10
------------	--	---------	----

E/AL-NS 32		1201659	10
------------	--	---------	----

E/AL-NS 35		1201662	10
------------	--	---------	----

E/AL-NS 35		1201662	10
------------	--	---------	----

E/AL-NS 35		1201662	10
------------	--	---------	----

VDE-ISS 6		1201934	1
-----------	--	---------	---

VDE-ISS 8		1201947	1
-----------	--	---------	---

VDE-ISS 8		1201947	1
-----------	--	---------	---

UC-TM 10 (see page 480)			
-------------------------	--	--	--

UC-TM 10 (see page 480)			
-------------------------	--	--	--

UC-TM 10 (see page 480)			
-------------------------	--	--	--

ZB 10 (see page 489)			
----------------------	--	--	--

ZB 10 (see page 489)			
----------------------	--	--	--

ZB 10 (see page 489)			
----------------------	--	--	--